

London Office of Technology & Innovation

Enabling Data Sharing in London

Jay Saggarr, Data Project Manager

 **LOTI_LDN**

 **loti.london**

#LOTI



loti

Data should enable us to deliver the outcomes we want to see in the world.

Projects often fail if they start with the data instead of the outcome.

LOTI are supporting boroughs establish the foundation for data sharing:

- Outcomes
- Tools
- Networks
- Trust

Data as a means

OUTCOME

What's our desired outcome?

What would we like to be different in the world?

"What specific person is better off in what specific ways because we acted?"

ACTION

WHO could do WHAT differently if they had better information?

"What's the intervention?"

loti

ENABLERS

Beyond the data product, what else is needed to achieve our desired outcome?

INSIGHT

What would someone need to see on a screen (the data product) to enable the action?

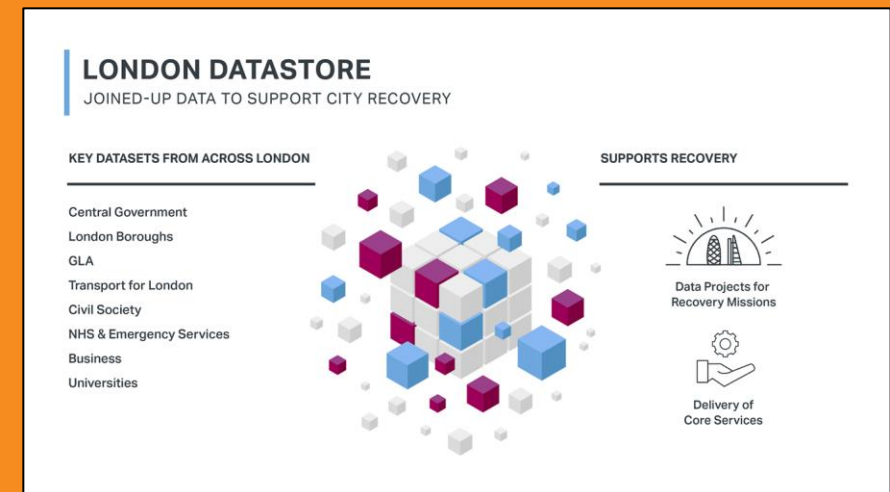
What data would be needed, can we access it and use it legally and ethically?

Six measures for borough data and IG teams to improve London data collaboration

1. Use LOTI's four step data methodology to help identify which datasets are relevant to achieving specific outcomes.
1. Use the London Datastore as the default platform for data sharing.
1. Use IGfL as the primary forum for creating and vetting pan-London data sharing agreements.
1. Use LOTI & IGfL's 7 Step Information Governance process.
1. Use the Information Sharing Gateway for creating Information Sharing Agreements
1. Use Dapian for creating DPIAs

[View the six measure in detail](#)

Getting the basics right



LOTI Data Science Network

A safe space for borough data scientists and analysts that code to share their challenges and enhance their skills with R and Python

Exploring Existing Projects:

- Unlicensed HMOs
- Identifying properties at risk of legal disrepair
- Predicting Arrears
- Golden Record / MDM

Building Skills:

- Programming Languages including: Python, R
- Machine Learning - building and re-tuning models

Sharing Ideas

- Machine Learning - example usecases
- Demonstrating the value of data science

```
# Need Tiddata 0.2.0

# weekly data
# ONS Infection Survey Data - usually published on Thursday or Friday
source("R/ons_infection_survey_fetch.R")
source("R/ons_infection_survey_clean.R")

# Daily data:

# From PHE dashboard/api
# Fetch PHE cases data - usually updated 4pm - 6pm each day
source("R/phe_api_cases_region_fetch.R")
source("R/phe_api_cases_region_clean.R")
source("R/phe_api_cases_utla_fetch.R")
source("R/phe_api_cases_utla_clean.R")
source("R/phe_age_sex_cases_fetch.R")
source("R/phe_age_sex_cases_clean.R")

# Hospital data
source("R/phe_api_healthcare_fetch.R")
source("R/phe_api_healthcare_clean.R")

# Fetch 111/999/online data - updated each morning
source("R/nhs_111_fetch.R")
source("R/nhs_111_clean.R")

source("R/datastore_cases_outputs.R")
# Check everything's looking OK
# Numbers against https://coronavirus.data.gov.uk/
# Check axis all looking OK - if not edit cases_update.rmd
viewer <- getoption("viewer")
viewer(paste0("output/", Sys.Date(), "_covid_cases.html"))

# THIS WRITES TO THE DATASTORE
# Including attaching data and redeploying "api-able" table
# London Datastore API key saved as "lds_api_key" environment variable
source("R/datastore_cases.R")
```

futuregov/

Data Exchange with the VCS Project



loti



Ministry of Housing,
Communities &
Local Government

loti

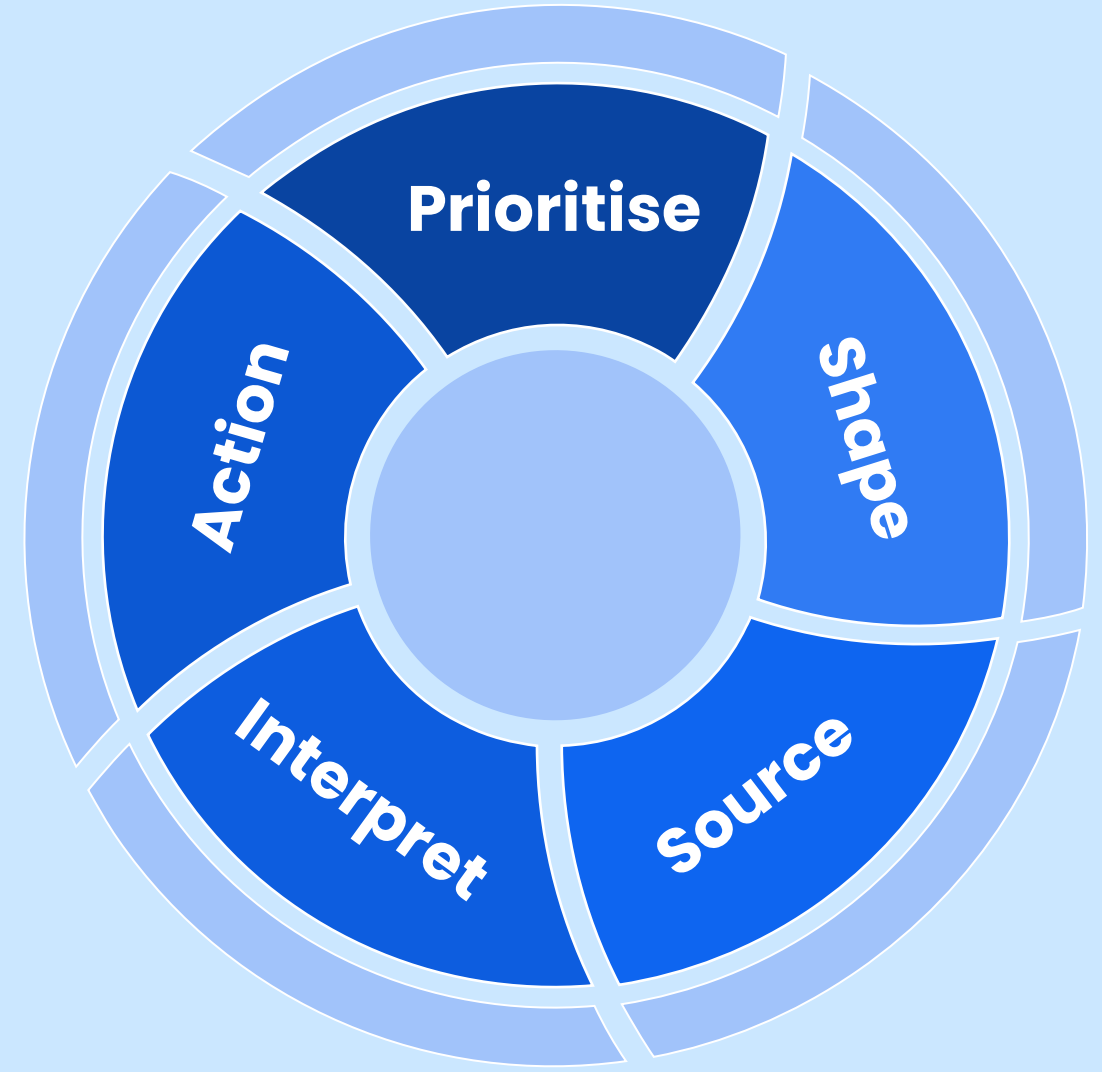


What's it for?

- ✓ Raise the collective local capacity and knowledge to respond to developing challenges in a sustainable way.
- ✓ Create momentum and ground for new data sharing and better coordinated action between partners.
- ✓ To provide space to find best practice from elsewhere and contextualise it locally for quick impact. (e.g. [Kent's new Domestic violence data sets and governance](#))
- ✓ To increase the legitimacy of and trust in local responses to the pandemic by acting openly and ethically.

The approach

- Design two models for how to start and run community insights projects. Suited to context of each authority (*Camden - high capacity, low trust. C Beds - low capacity, high trust*)
- Establish an early adopter cohort to work on a single prioritised, Covid-related project in each region Supported by council service owners to help pilot from November onwards.
- Create research plan to learn from pilot projects. Plot approaches attributes relative to other efforts worldwide for MHCLG and Loti to share.



Data Exchange with the VCS

- Trust and relationships need to be built before data will flow.
- Experimentation and adaptation will be encouraged to find the right balance of insights and skills sharing
- The project will show how to establish those relationships and build trust in different local contexts

Follow the projects progress:

<https://loti.london/projects/data-exchange-with-the-vcs/>

futuregov/

Data Exchange with the VCS Project

 Camden

loti

Central
Bedfordshire



Ministry of Housing,
Communities &
Local Government

loti

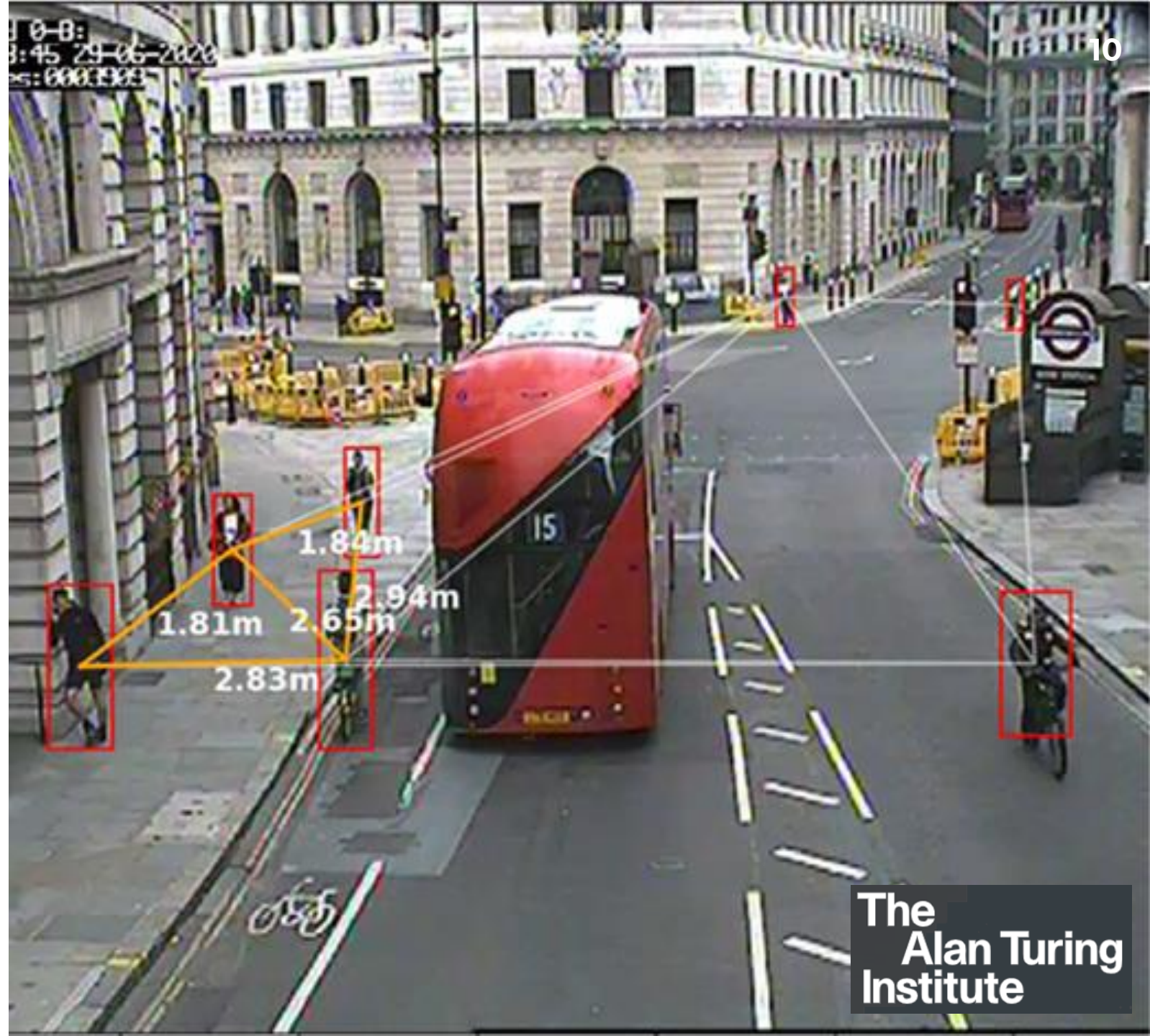
GLA: Anonymised and Aggregated data from o2

- Hourly counts
- worker/visitor/resident
- by MSOA
- 1st July '20 to 31st Oct
- context from 2019

Boroughs signed up so far: Brent, Camden, Ealing, Hounslow, Richmond, Wandsworth, Westminster

- Effectiveness of social distancing street and road changes
- Understanding impact on high streets and economic activity
- Managing local infection outbreaks

Mastercard spend data - coming start of Nov.





 @LOTI_LDN
 www.lotilondon.com
#LOTI

loti