

# LGA – AI, Automation and Bots4Good

Jenny McEneaney – Cyber, Digital and Technology  
Senior Policy Improvement Adviser

November 2024

# Our Team: Cyber, Digital and Technology

- 1.4 million workforce and £121 billion annual spend
- 21-person team funded through MHCLG Local Digital team
- *Improving the secure and inclusive use of technology by councils and their communities*



General  
support



Sector led  
consultancy



Policy



Communities  
of practice

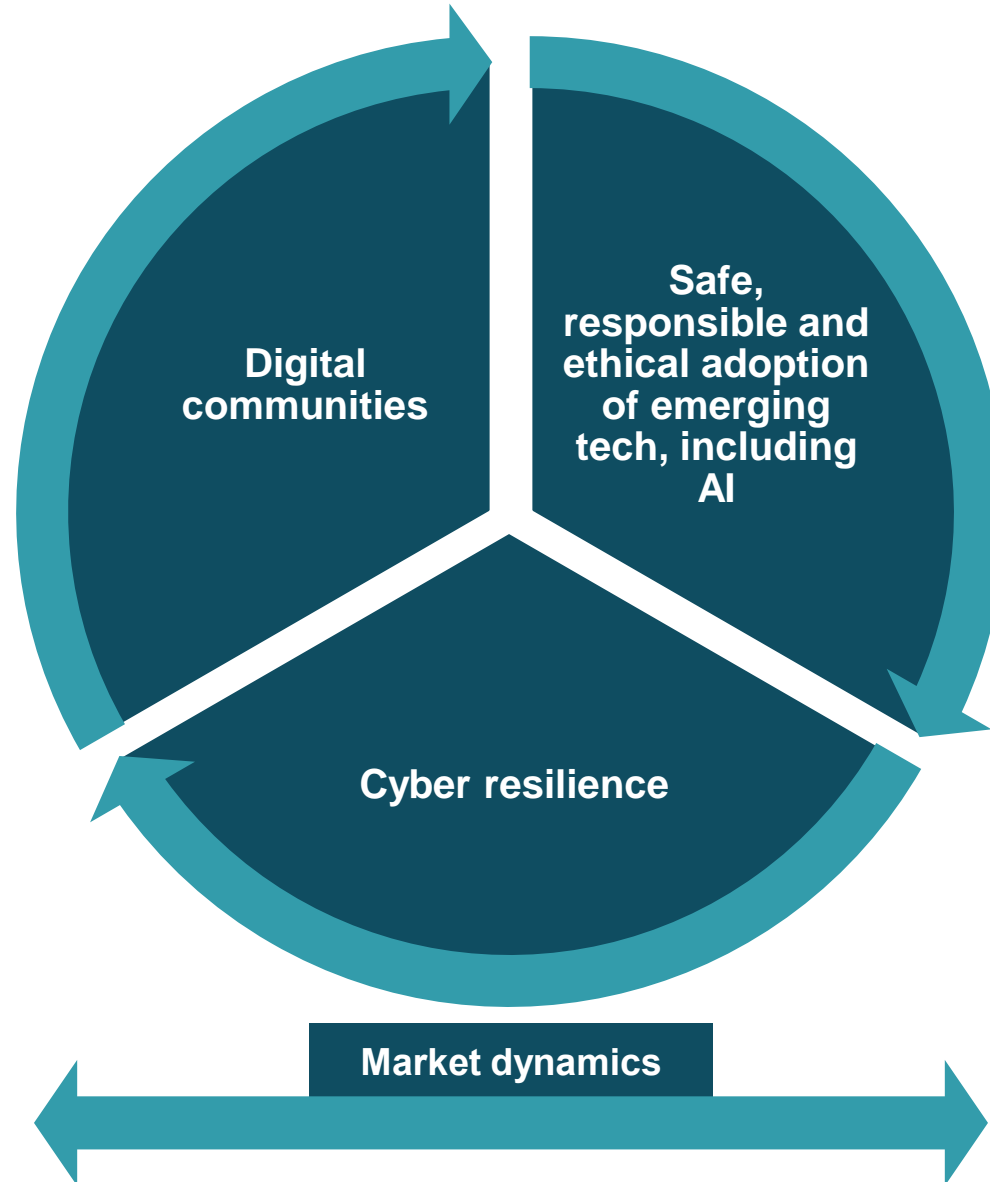


Incident  
Support



Research

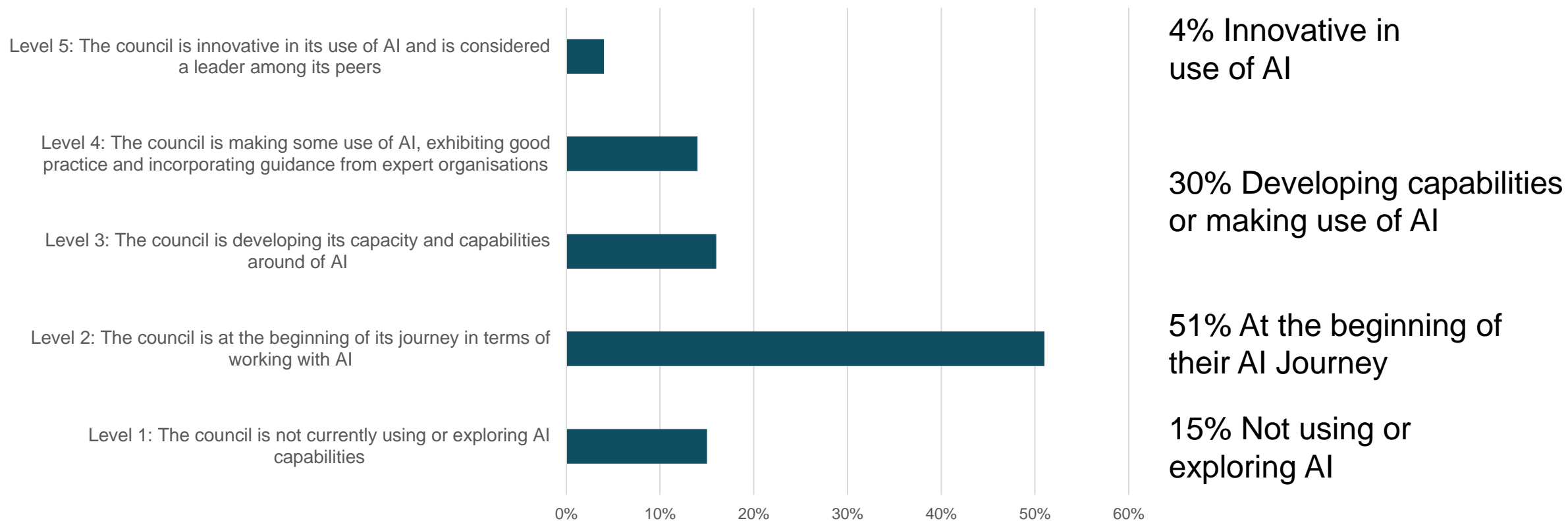
# Our Priorities



# State of the sector: AI

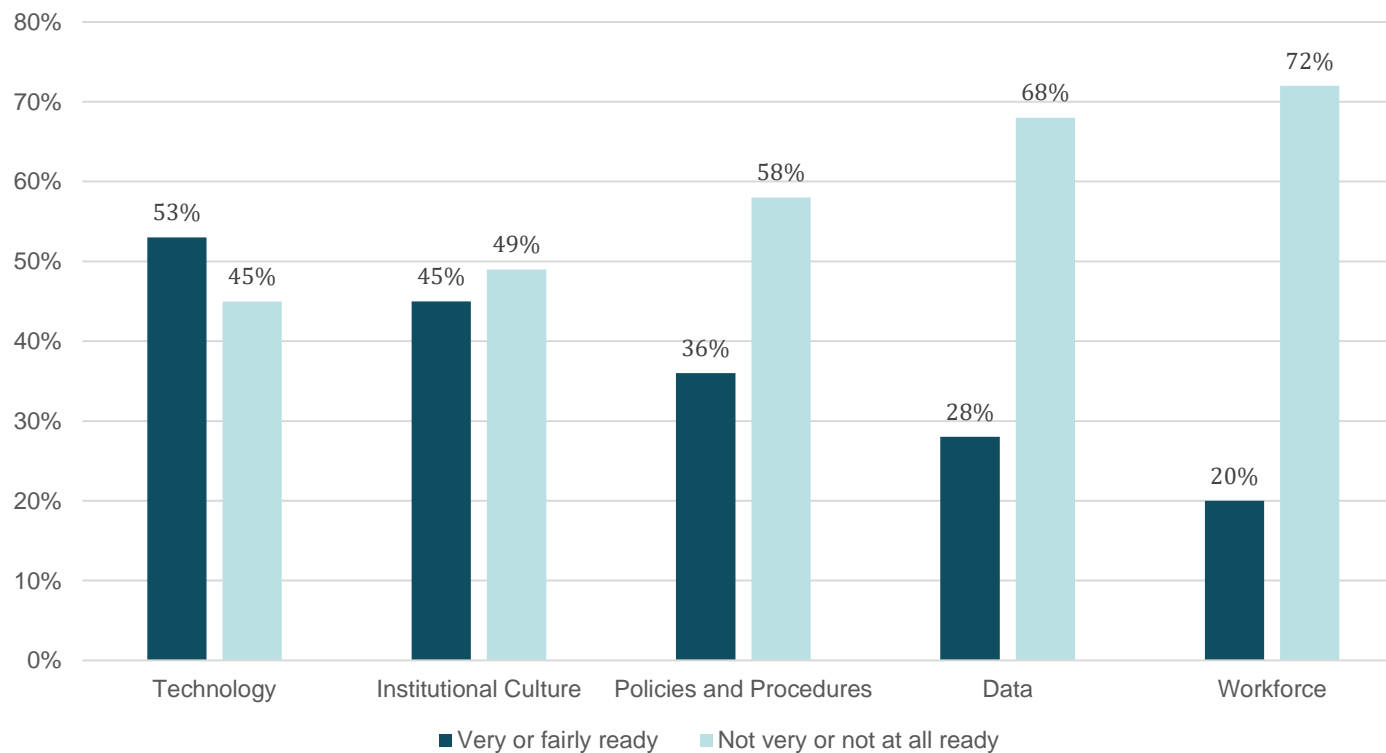
# Overview

## Council's current use of AI capabilities



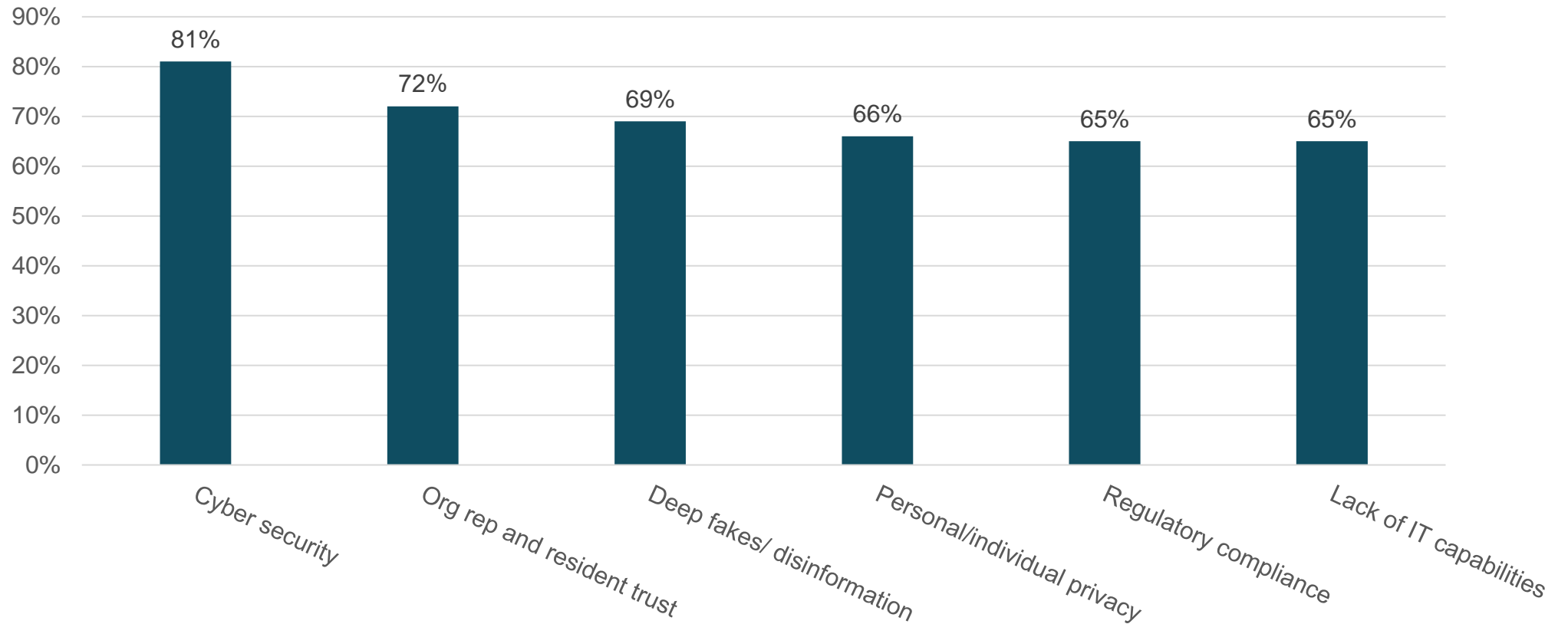
# Readiness

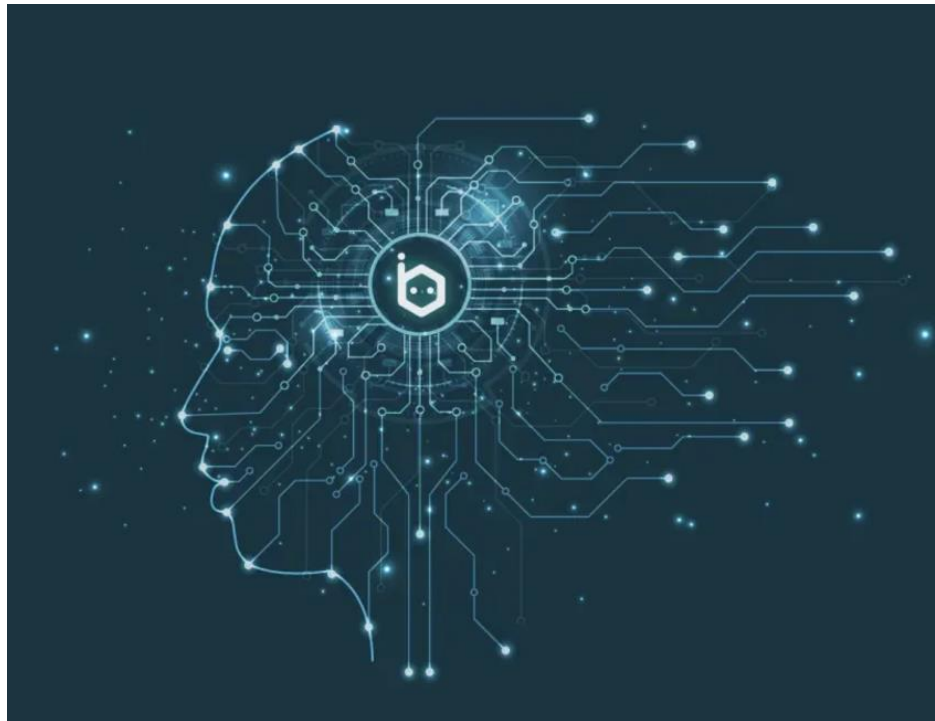
How ready, if at all, is your council for adopting or continuing to adopt AI?



# Risks

## Perceived Risks





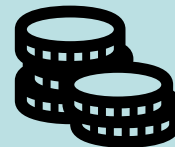
## Halton Borough Council: Digital Front Door



Department of Health and Social Care and Department of Education funded with Beebot AI



Automated appointment scheduling, info dissemination and chatbot to answer questions and provide guidance



Provides analytics to improve service, improved accessibility for families, and saves staff time for more complex engagement



# Engagement and Support

# Our AI Networks

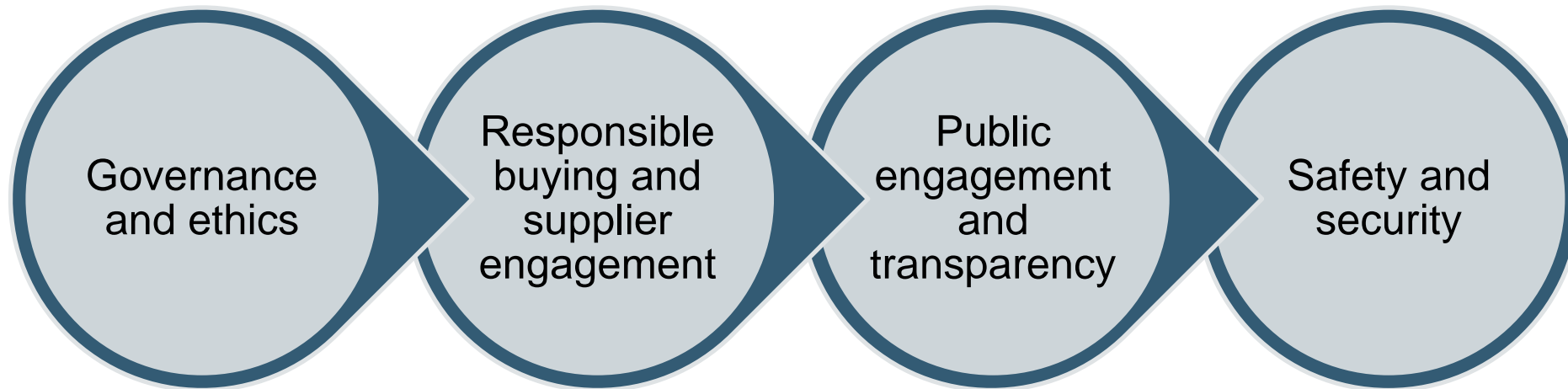
## AI Network

- 450 Local government officers
- A group open to all officers with an interest in AI, covering key themes relating to AI and highlighting best practice in the sector

## AI Practitioners Network

- 250 Local government officers
- A technically focused group, exploring approaches and solutions that go beyond off the shelf solutions

# Key Themes within AI Network



# Building trust

- Guidance development with ICO and EHRC (with LOTI and other local government partners)
- What does good look like for suppliers? AI Management Essentials
- Engaging with CDDO strategic supplier partnership team: how can we coordinate assurance with key technology companies?
- How can we facilitate trusted engagement pre-procurement?

# What is the Technology Innovation Showcase?



## Challenge Statements

- This project has collated 96 challenges facing councils.
- Councils submitted “how can we” statements they believed could be solved using AI and smart technology
- We are encouraging collaboration and councils to think challenge first in a supplier-led market



## Vendor Engagement

- We received 73 unique solutions
- Engaged vendors have to agree to “work in the open”
- Vendors will be subject to eligibility criteria and vetting in line with existing and new assurance mechanisms
- Support and feedback provided on responsible deployment requirements.



## Technology Innovation Showcase

- 4 challenge statements showcased at our Technology Innovation Showcase on 14 November.
- The aim of the event is to foster collaboration on key challenges facing the sector and to highlight the art of the possible
- Report available soon

# LGA Technology Innovation Showcase

Innovative solutions to challenges in English local authorities



## Challenge One Supporting Social Care Practitioners



How can AI and smart tech tools enable social care practitioners to spend more time with people who require their support?



# LGA Technology Innovation Showcase

Innovative solutions to challenges in English local authorities



## Challenge Two Improving Local Places



How can AI and smart tech tools improve local places through optimising the delivery of services?



# LGA Technology Innovation Showcase

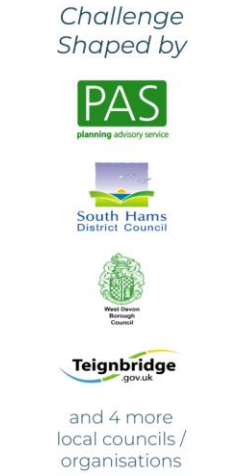
Innovative solutions to challenges in English local authorities



## Challenge Three Efficiency of the Planning Process



How can AI and smart tech tools enhance the efficiency of different stages of the planning process?



# LGA Technology Innovation Showcase

Innovative solutions to challenges in English local authorities



## Challenge Four Digital Front Door



How can AI and smart tech tools help implement a digital front door to council's information and services?



# Our AI Hub

## Artificial Intelligence Hub

Welcome to the LGA's Artificial Intelligence Hub. Here, you'll find resources and guidance to help you responsibly explore the possibilities of AI and connect with peers. As a sector, we are collaborating with partners, academia and government to ensure local authorities are part of an AI-powered future.



# Thank you for listening

Jenny: [jenny.mceneaney@local.gov.uk](mailto:jenny.mceneaney@local.gov.uk)

LGA Cyber, Digital and Technology  
Networks

