



England

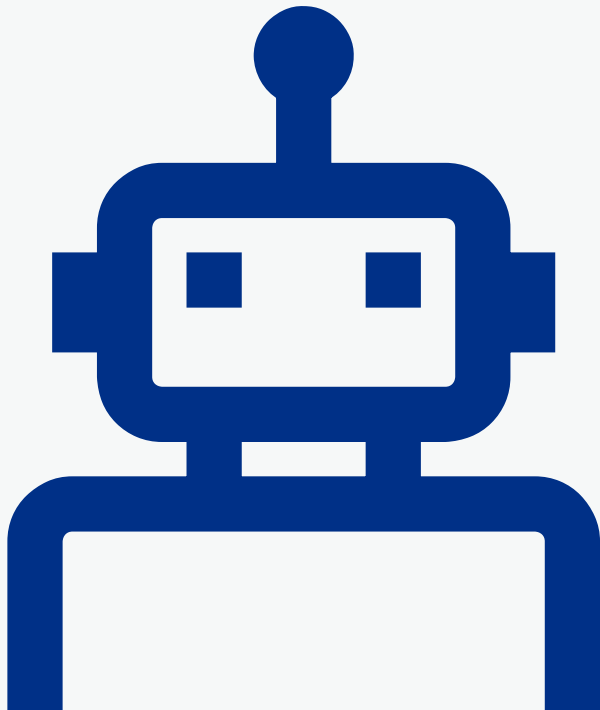
AI in Healthcare Education

Innovate safely

Iain O'Neill
April 2024



AI in the NHS - Overview



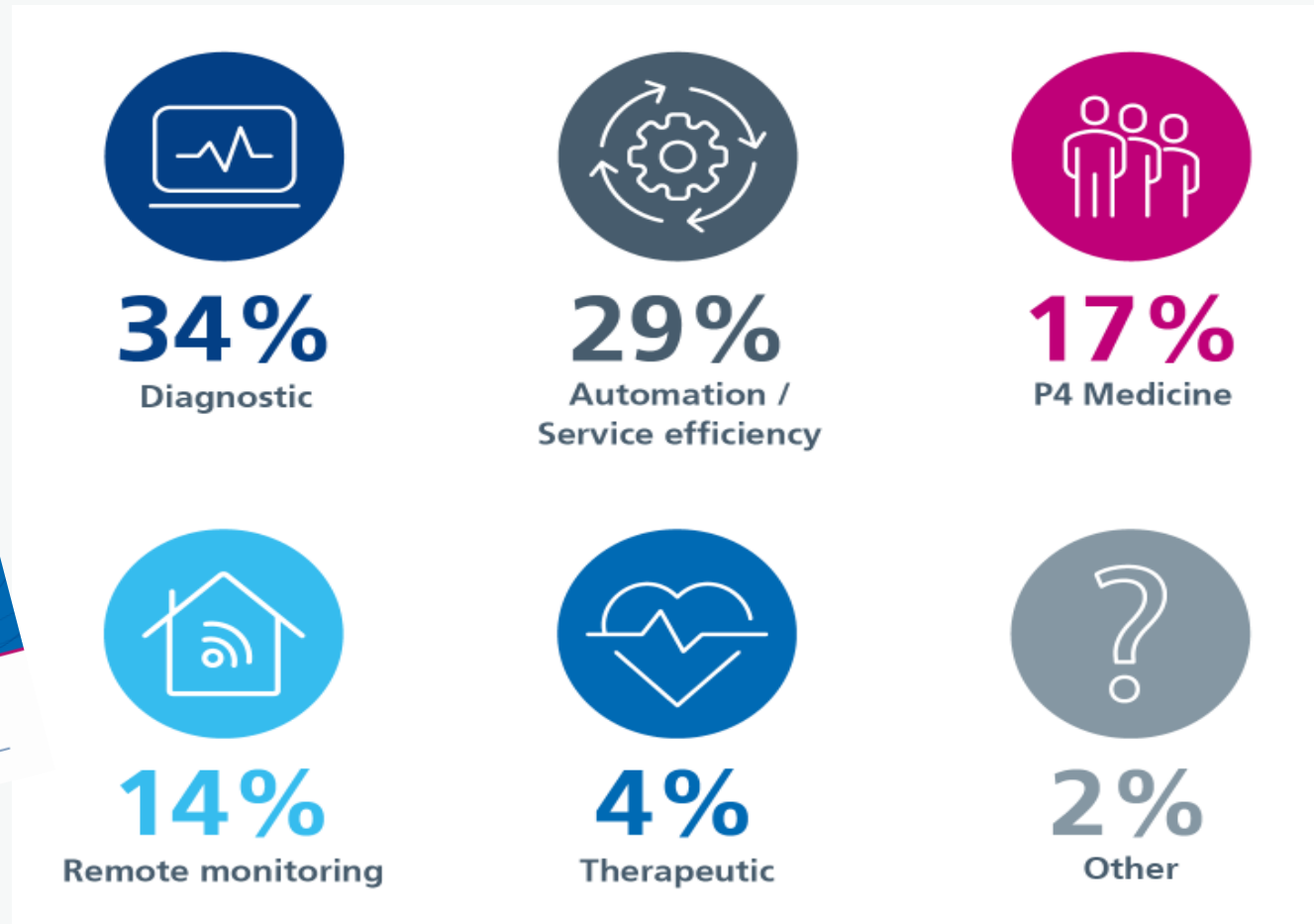
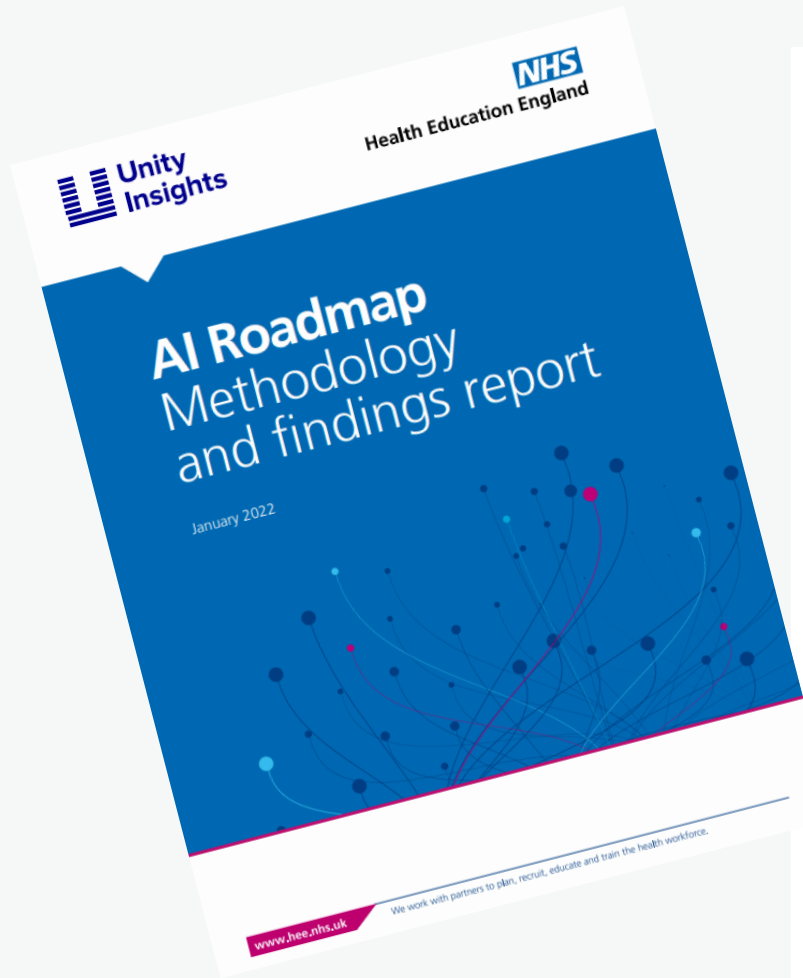
Scale

- In 2020 a central NHS AI Lab was established, one of the worlds largest programmes on evaluation of healthcare AI product, now has
- 86 projects in 444 live settings, 99 hospitals and 344 primary care operators.

Results

- Demonstrating positive results in –
 - Lung cancer screening
 - Stroke management
 - Dermatology pathways

AI in the NHS - Overview



AI and Digital Archetypes and the AI

Shapers

people in leadership positions in the NHS and other arm's length bodies
policy-makers/ regulators
professional educators

Drivers

clinical commissioners
service/digital transformation leads,
Chief (clinical) Information Officers

Creators

Clinical specialists/ Data scientists
software engineers
computer science researchers

Embedders

IT / data teams
clinical scientists/specialists
clinical safety officers

Users

healthcare professionals
clinical researchers
non-clinical staff that use AI and digital technologies

Educator Workforce Strategy

“Embedding evolving and innovative models of education...”

This includes creating the conditions for successful adoption of evidence-based educational technologies and simulation at scale which are equitable, efficient and sustainable.”

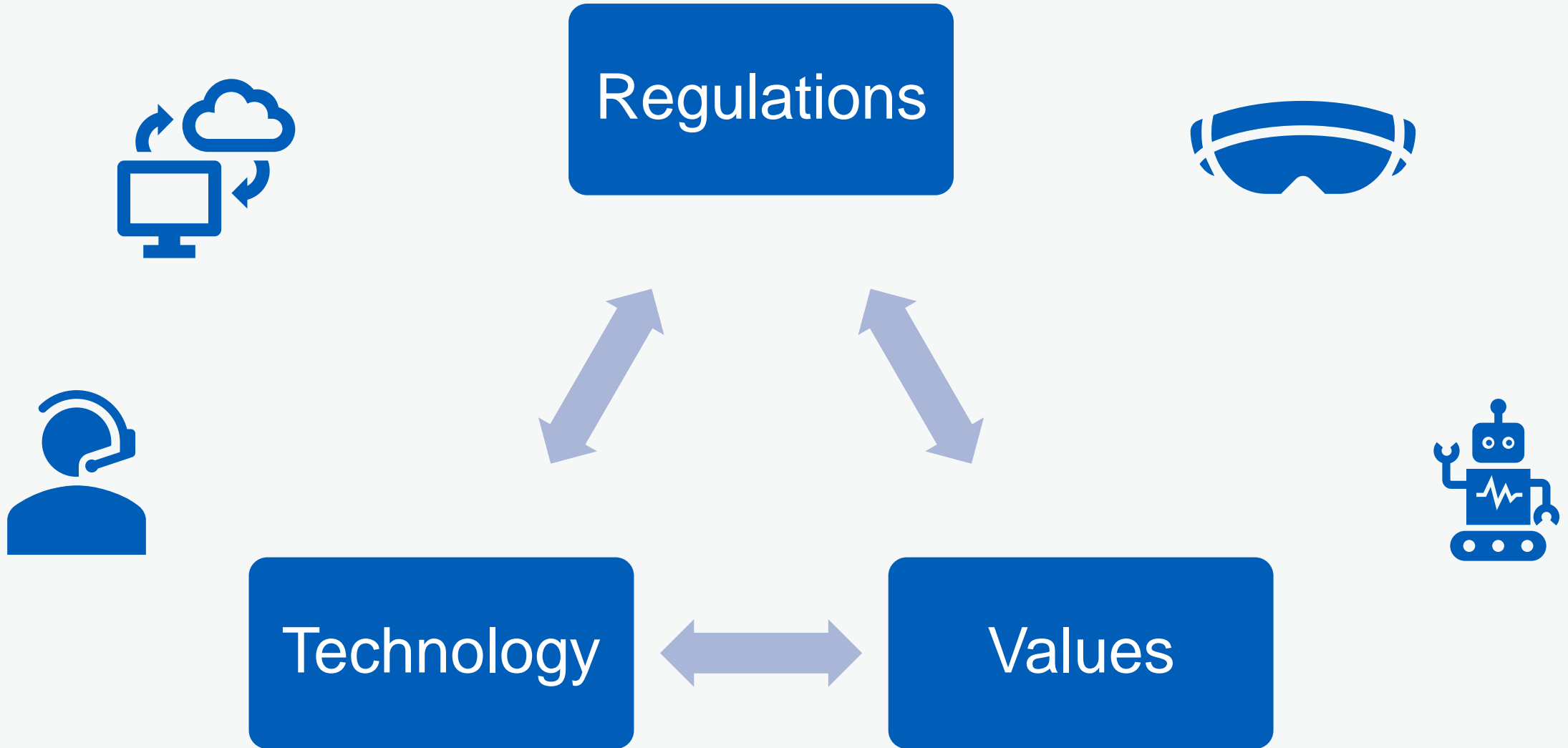
Long Term Workforce Plan

“Work with professions to embrace technological innovations, such as artificial intelligence...”

The Plan is based on an ambitious labour productivity assumption of up to 2% (at a range of 1.5–2%).”



The Context for Generative AI in Healthcare Education



AI in Healthcare Education Steering Group

Problem Statement

What do we need to do to unlock all of the benefits of AI in healthcare education and mitigate all of the risks?



Interest in and the adoption of AI has been accelerated by Large Language Models which has provided an intuitive interface to the multifunctional abilities of generative AI and other forms of AI. The field is a rapidly moving, volatile industry with many moving parts.



AI has the potential to improve the speed and efficiency with which we produce content, change the way we deliver content and free up educators from admin to get on with high value education activities.



Along with these enormous opportunities there are a number of risks, some of which are predictable but many of which are not properly understood.



In the highly-regulated healthcare environment there is an additional risk that innovation will either be stifled by overregulation or happen in risky “shadow” developments.

Guiding Principles on AI in Healthcare Education

A cross-education collaboration for Trust



Education



Leadership



Professional Development



Data Protection and IP



Governance



Judgement



Accountability



Transparency



Benefits

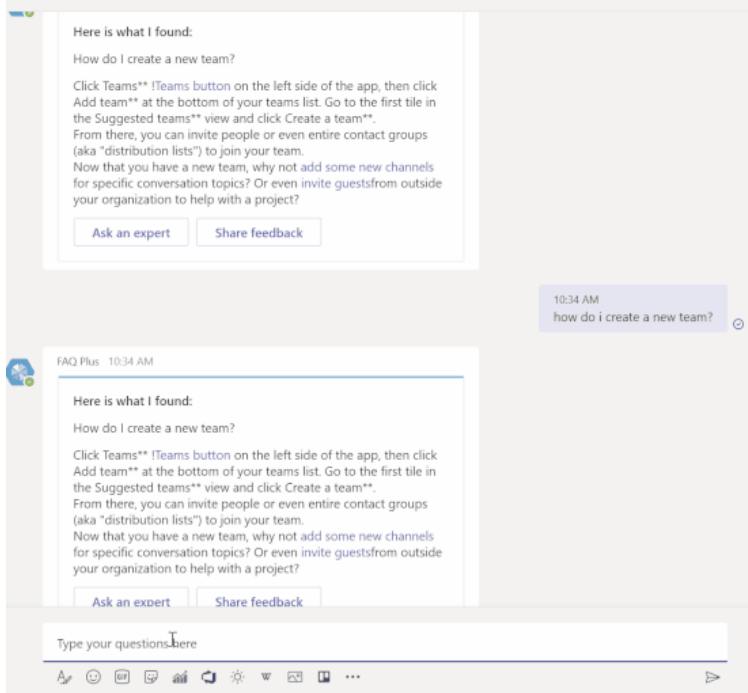
Having principles to refer to supports many areas of work:

Internal stakeholders – TEL service account, image pilot, content pilot, AI chatbot, editorial assistant horizon scanning automation

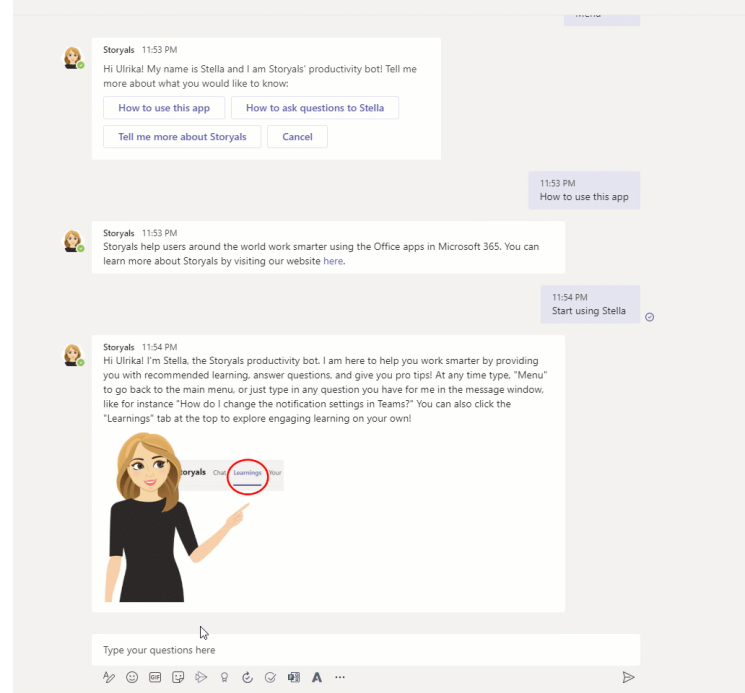
External stakeholders – AI CoP pilot, Copilot worklab, CPD, assessment research technical support, Assessment and feedback tools.

Scenarios we have considered

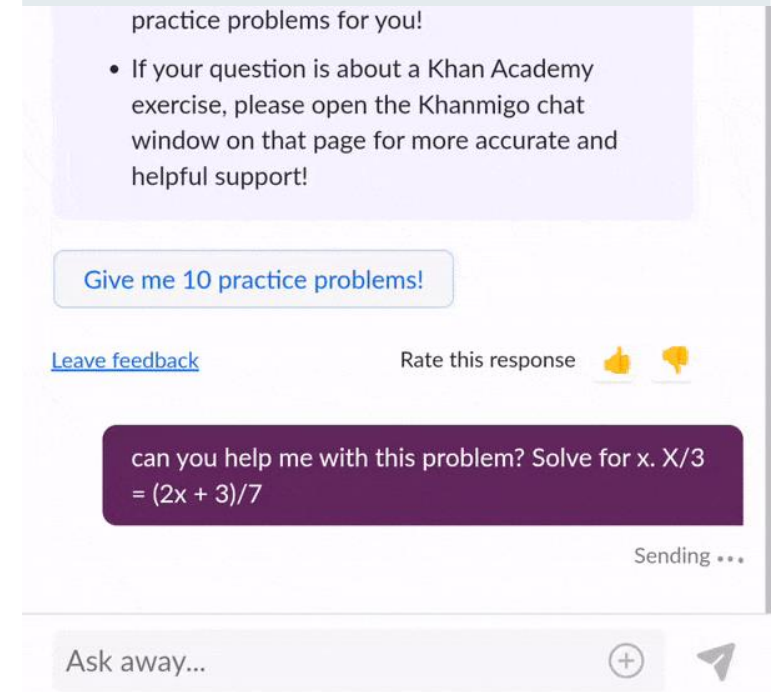
Basic FAQ Bot



Advanced AI-Driven Bot



Full-Scale Virtual Tutor



[Modernize employee experience with this no-code chatbot in Teams](#)

[Storyals and WorkplaceBuddy in new partnership - Storyals News](#)

Stay Connected

NHS

England

NHS England's Technology
Enhanced Learning (TEL) Team



<https://forms.office.com/e/DhdenttUFh>



@NHSE_TEL / @NHSE_WTE

Thank You



[@nhsengland](https://twitter.com/nhsengland)



[company/nhsengland](https://www.linkedin.com/company/nhsengland)



[england.nhs.uk](https://www.england.nhs.uk)