

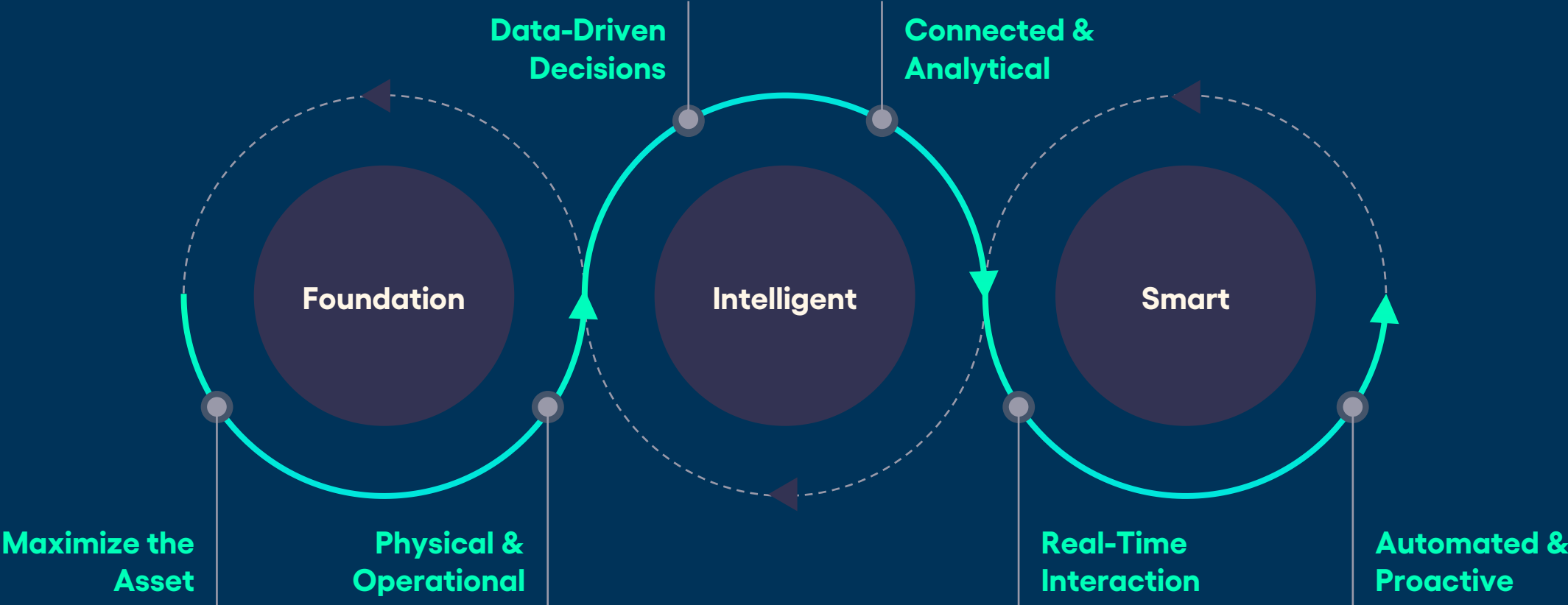
Smarter Assets, Sustainable Communities.

Brightly, a Siemens company, is the global leader in intelligent asset management solutions, enabling organisations to transform the performance of their assets.

Brightly's cloud-based platform leverages more than 20 years of data to deliver predictive insights that help users through the key phases of the entire asset lifecycle.



Brightly Asset Management Journey



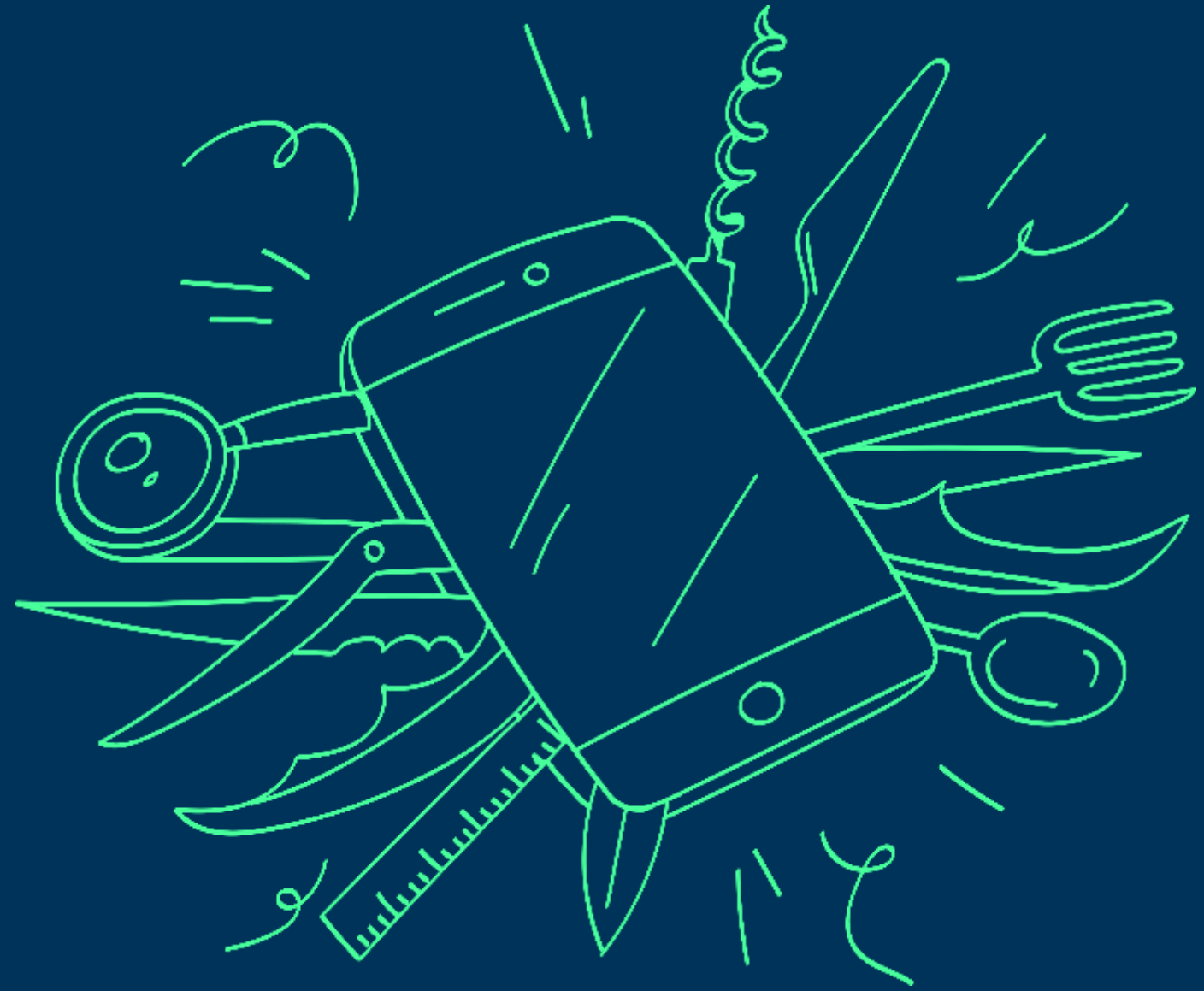
Dependable asset register to consolidate asset information, schedule maintenance and monitor asset conditions

Use analytics to identify focus areas for action and investment and support data-driven decisions

Target solutions (automation, interaction, proactive communications, etc.) to have impact on key areas of focus



**Combining the
real and digital
world to empower
clients to act
flexibly and
sustainably**



Siemens + Brightly



Application independent integrations using industry standard API technology

CRM



Finance



Contractor



GIS



Technology



Smarter Assets.



Parks & Grounds

Green Spaces

Streetlights

Traffic Signals

Bollards

Carriageways

Pipes

Signs

Verges

Buildings

Bus Stops

CCTV

Fencing & Barriers

Grit Bins

Bridges & Structures

Cycle Ways

Trees

Waste Bins

Light Rail

Street Furniture

Play Areas

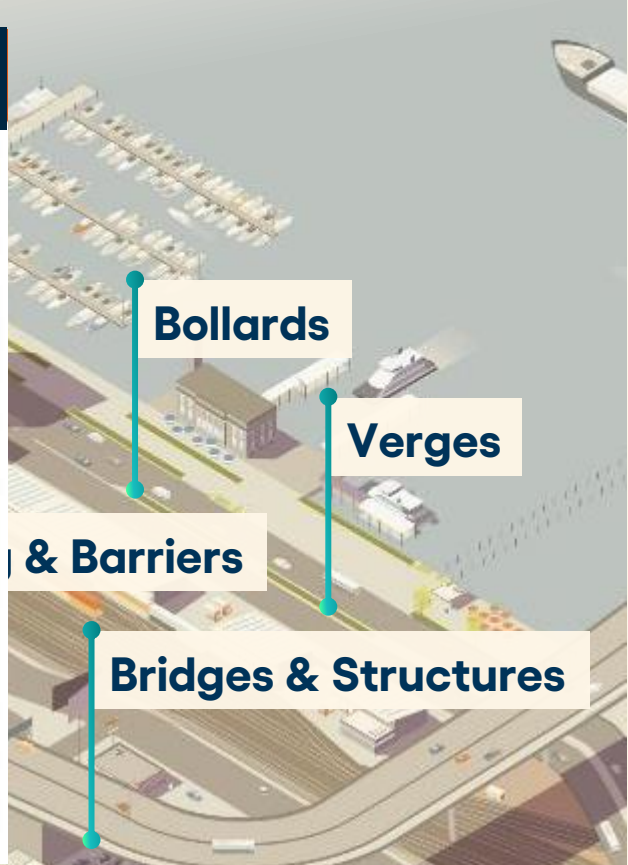
Footways

Road Markings

Gullies & Drains

Cemeteries

Allotments



Bollards

Verges

& Barriers

Bridges & Structures



Street Furniture

Waste Bins

Allotments

Gullies & Drains

Play Areas

Footways

Cemeteries

Light Rail

Road Markings

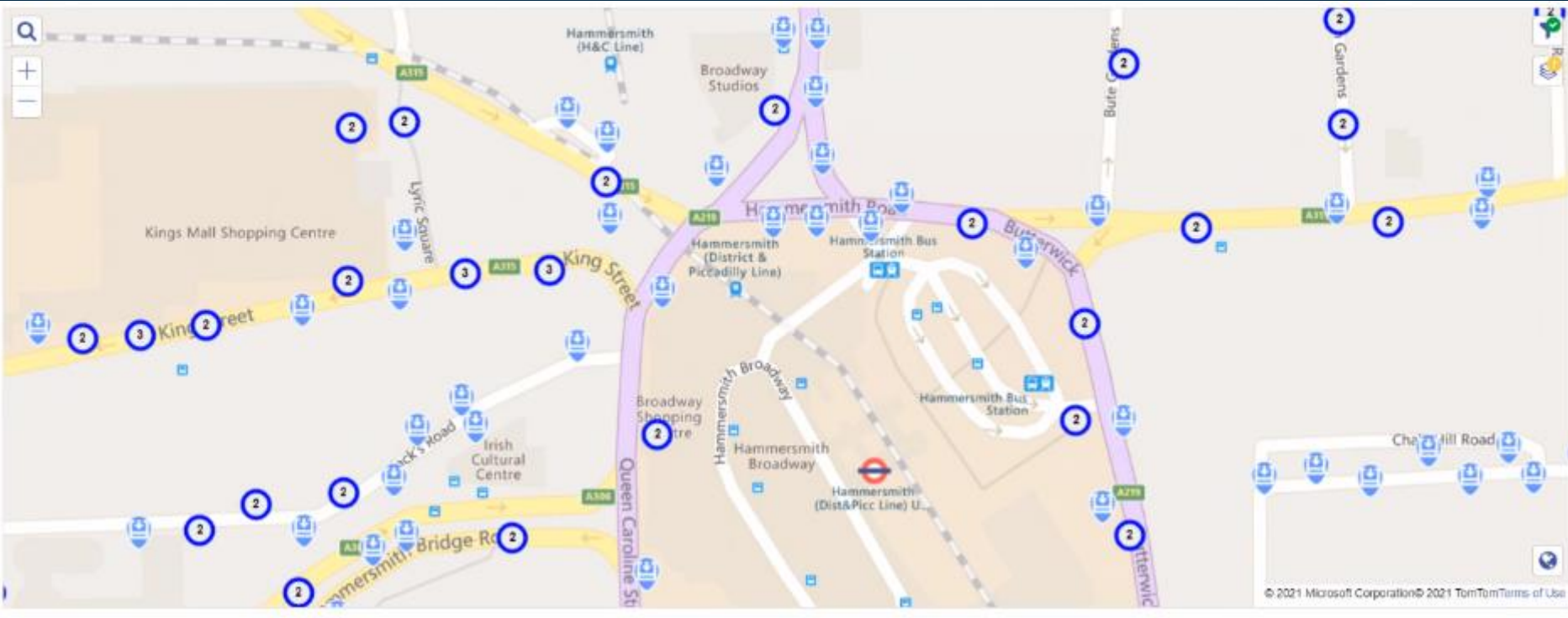
Confirm®



Bollards

Verges

Confirm®



Street Furniture

Allotments

Wc

S

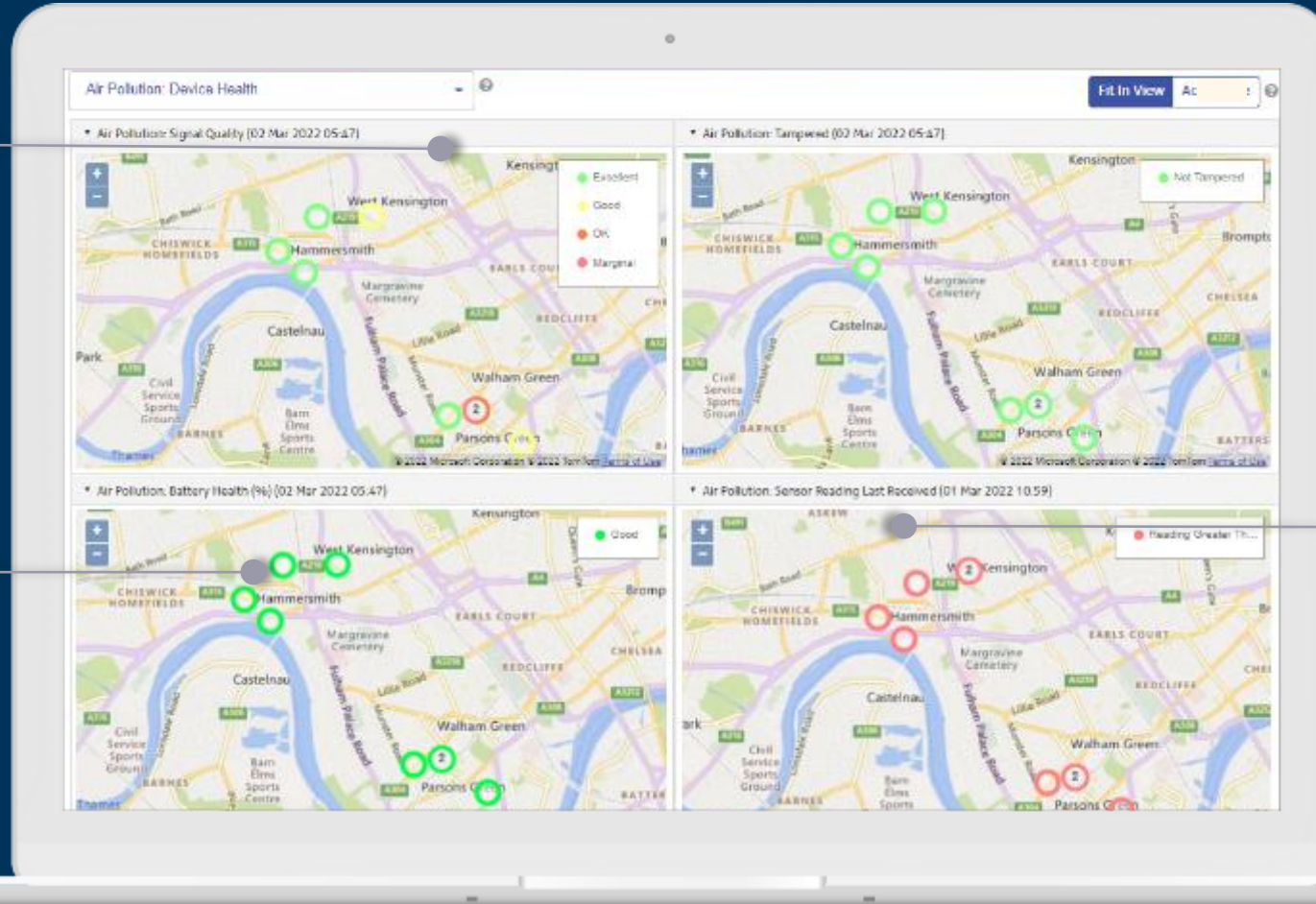
Brightly – IoT Integration

Dashboard view

Traffic-light dashboards to trigger events once sensors hit certain thresholds

Sensor agnostic

Pulls sensor data from any sensor, taking readings on temperature, air quality, fill levels and many more...



Single Spatial View

Visibility of data across assets, teams and processes



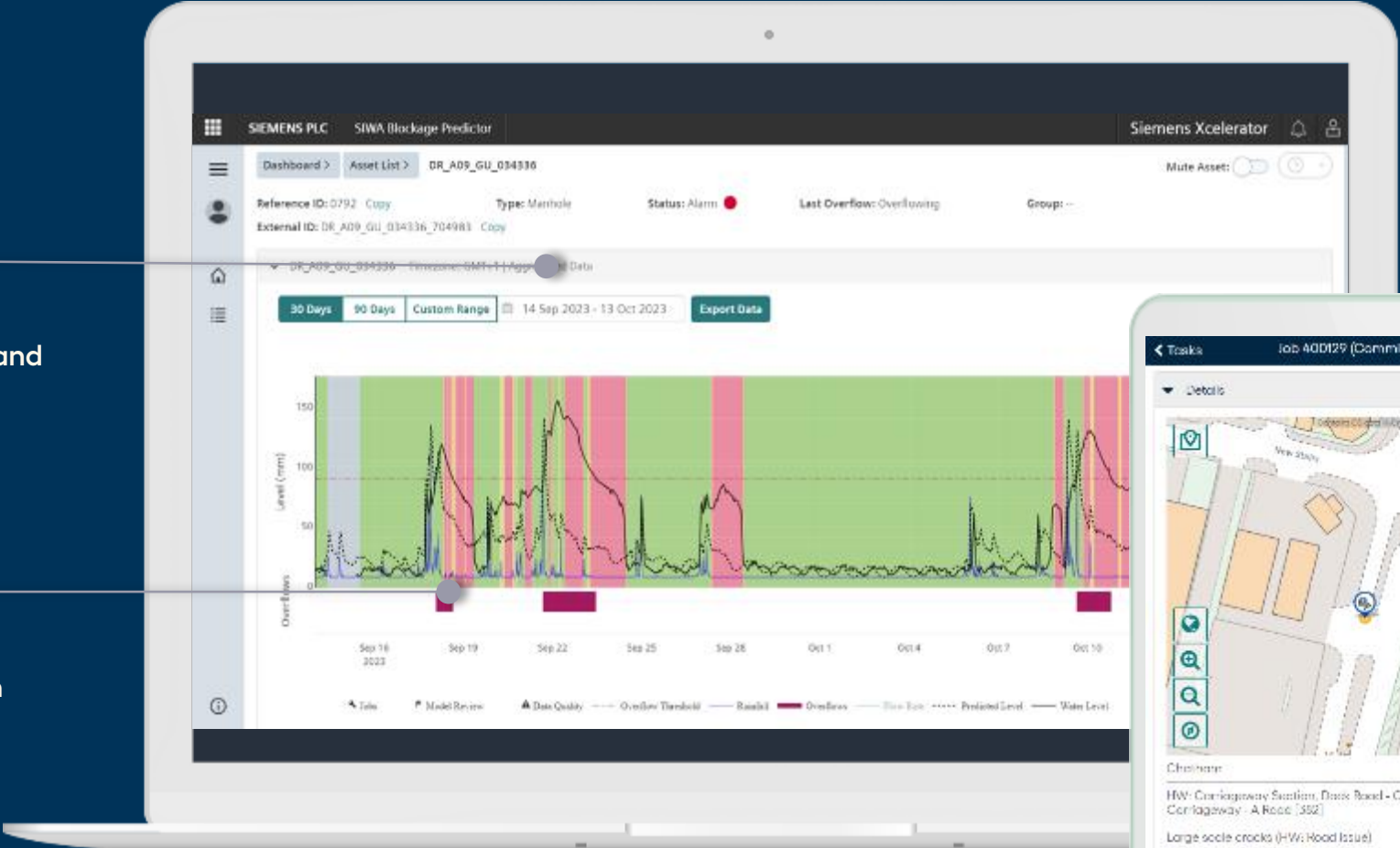
Siemens Blockage Predictor

Rainfall data

Use rainfall predictions and weather event data

IoT Sensor Feed

Couple rainfall data with IoT Sensor data



Field working

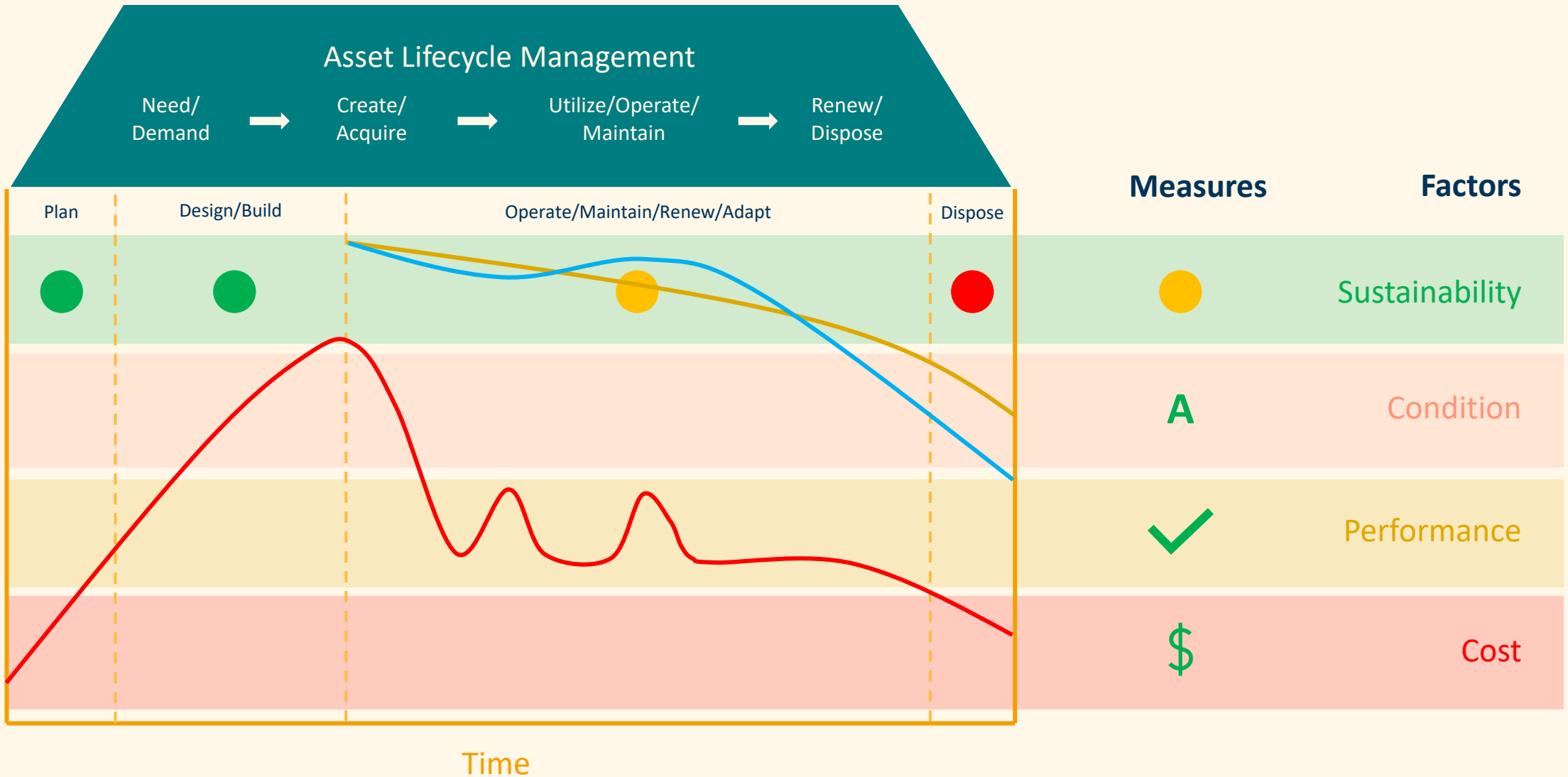
Auto-job allocation to crew in the field



Sustainable Communities.



Asset Lifecycle Management 2.0



Operate and Maintain

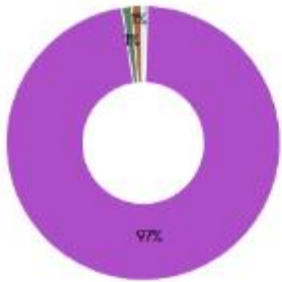


Z - Brightly Carbon Reporting



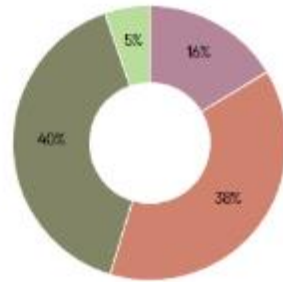
Fit In View Actual Size ?

▼ Brightly Carbon by Type (03 Jul 2023 12:43)



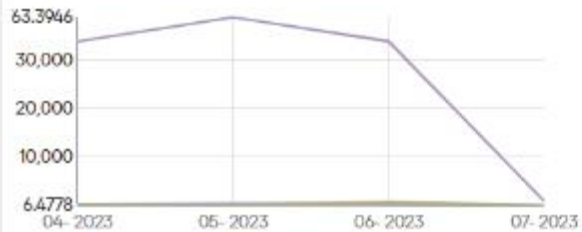
● Gully Emptying
 ● Pothole Repair
 ● Safety Inspection
 ● Signs and Lines
 ● Tree Cutting and Vegetation

▼ Brightly Carbon By Type Excl Pothole (03 Jul 2023...)



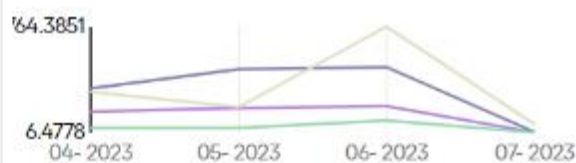
● Gully Emptying
 ● Safety Inspection
 ● Signs and Lines
 ● Tree Cutting and Vegetation

▼ Brightly Carbon by Month (03 Jul 2023 12:43)



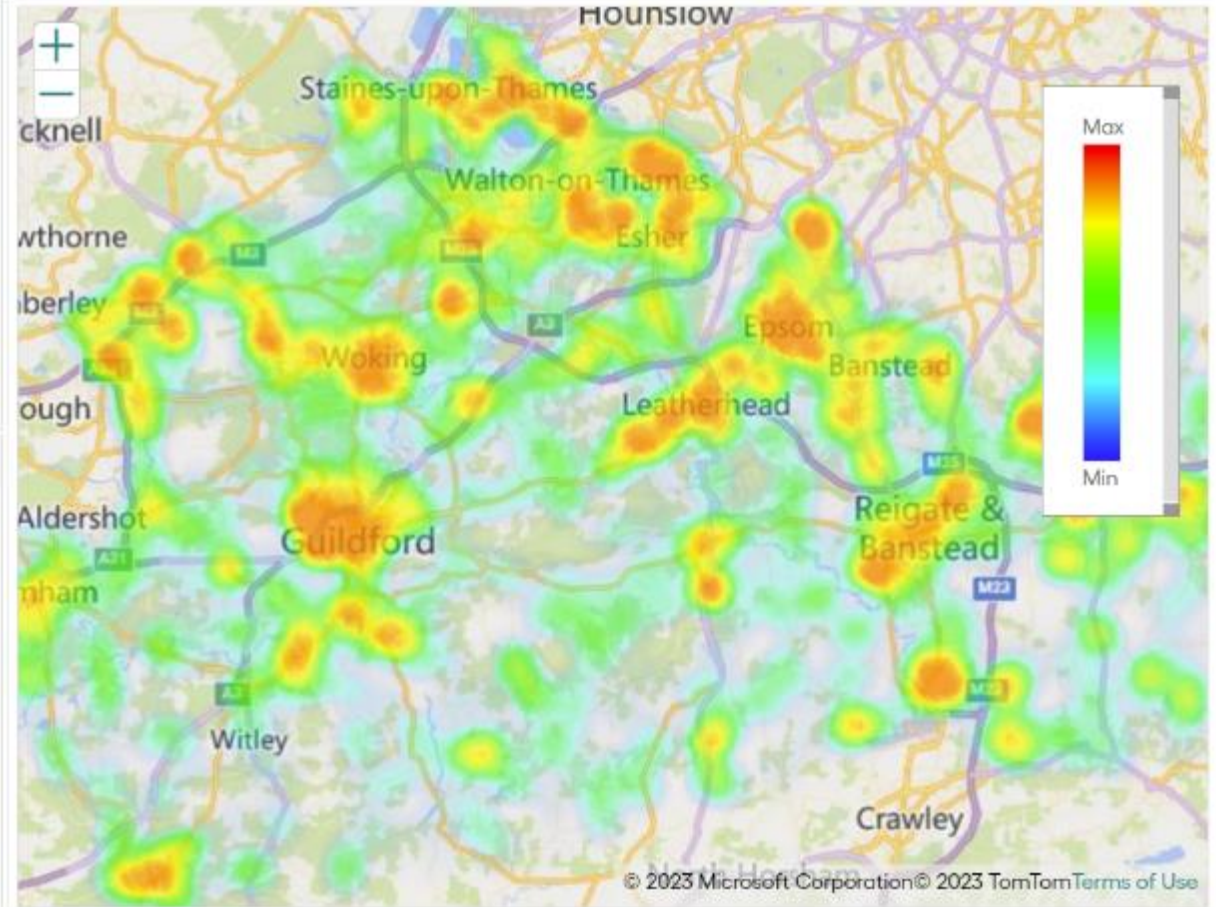
● Gully Emptying
 ● Pothole Repair
 ● Safety Inspection
 ● Signs and Lines
 ● Tree Cutting and Vegetation

▼ Brightly Carbon by Month Excl Pothole (03 Jul 20...)



● Gully Emptying
 ● Safety Inspection
 ● Signs and Lines
 ● Tree Cutting and Vegetation

▼ Brightly Carbon Heatmap (03 Jul 2023 12:43)



© 2023 Microsoft Corporation © 2023 TomTom Terms of Use

Baseline

2023

2024

2025

2026

2027

Collect data



Natural Capital recorded



Decision Support data



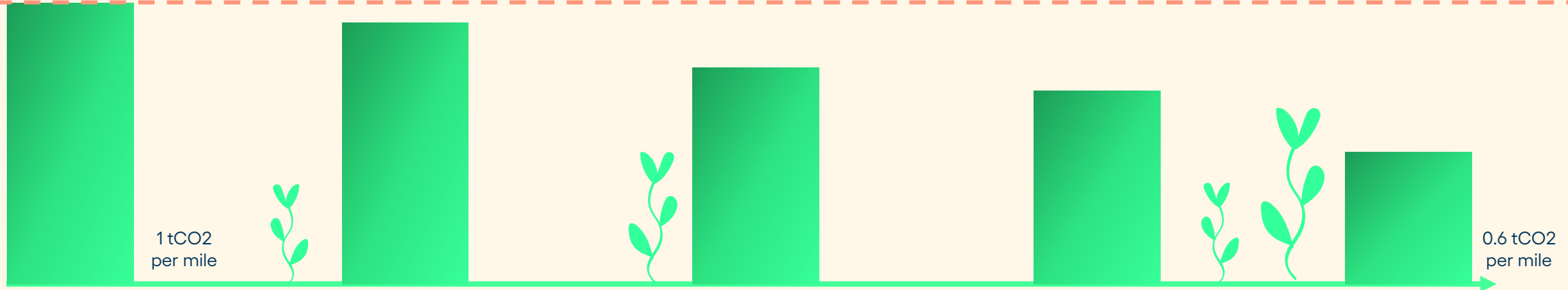
Culture Change



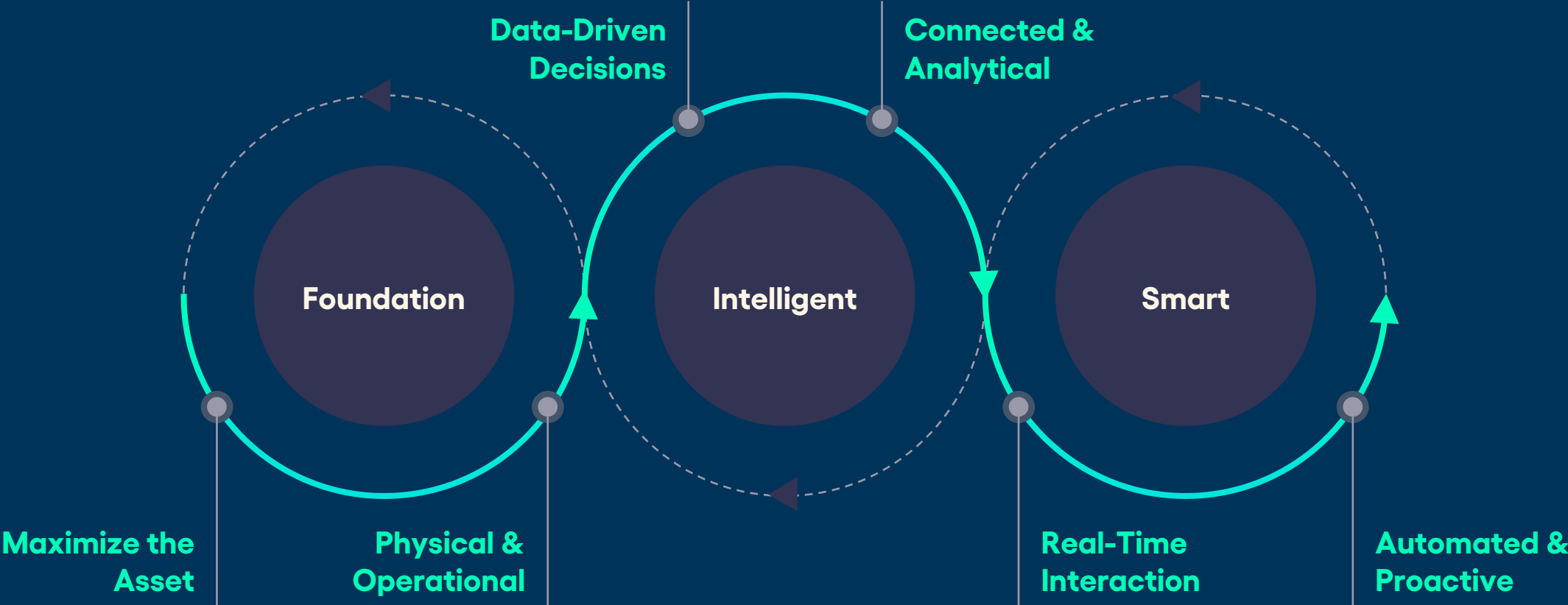
On track for Net Zero targets



Baseline



Brightly Asset Management Journey



Dependable asset register to consolidate asset information, schedule maintenance and monitor asset conditions

Use analytics to identify focus areas for action and investment and support data-driven decisions

Target solutions (automation, interaction, proactive communications, etc.) to have impact on key areas of focus



Thank you



A Siemens Company